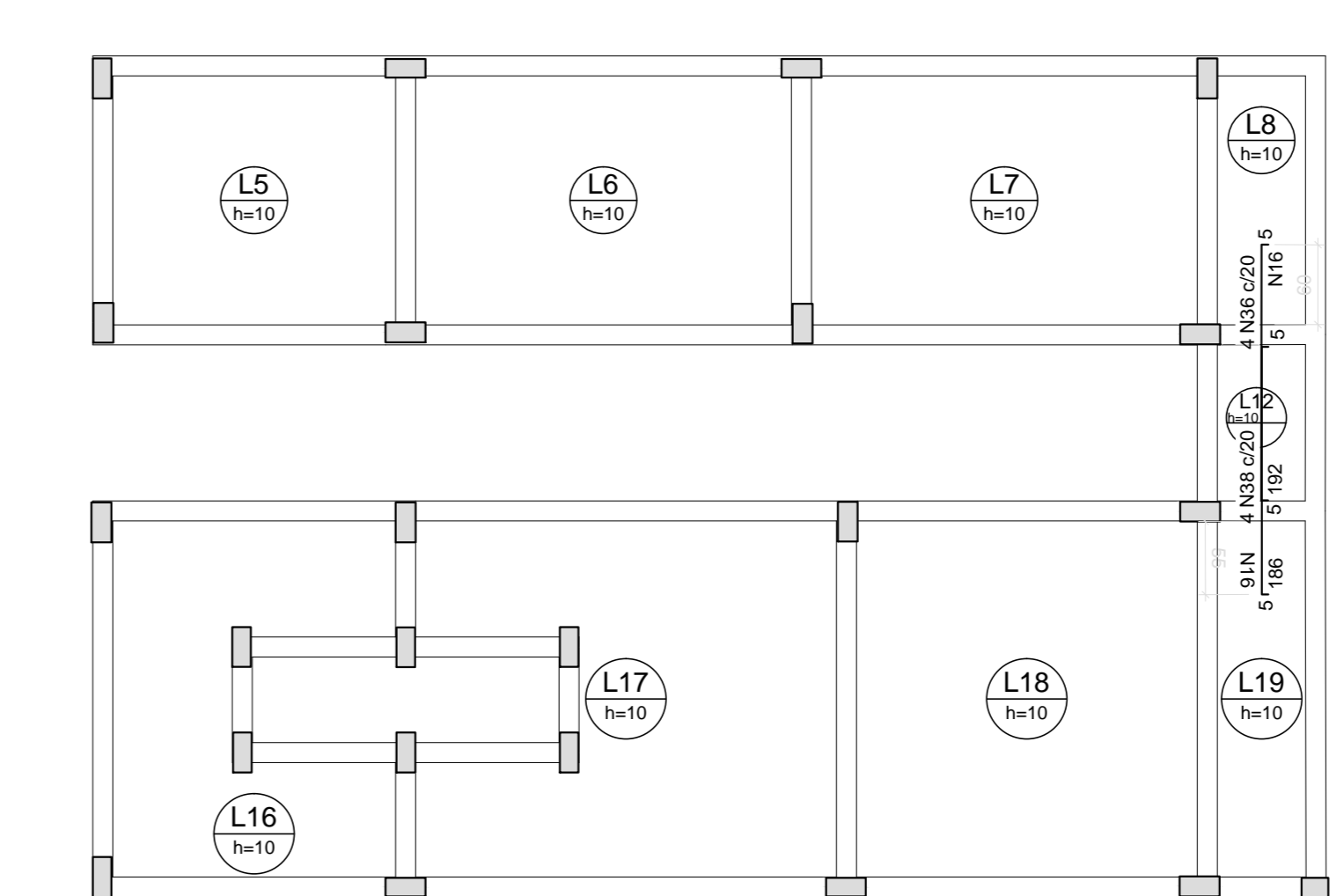
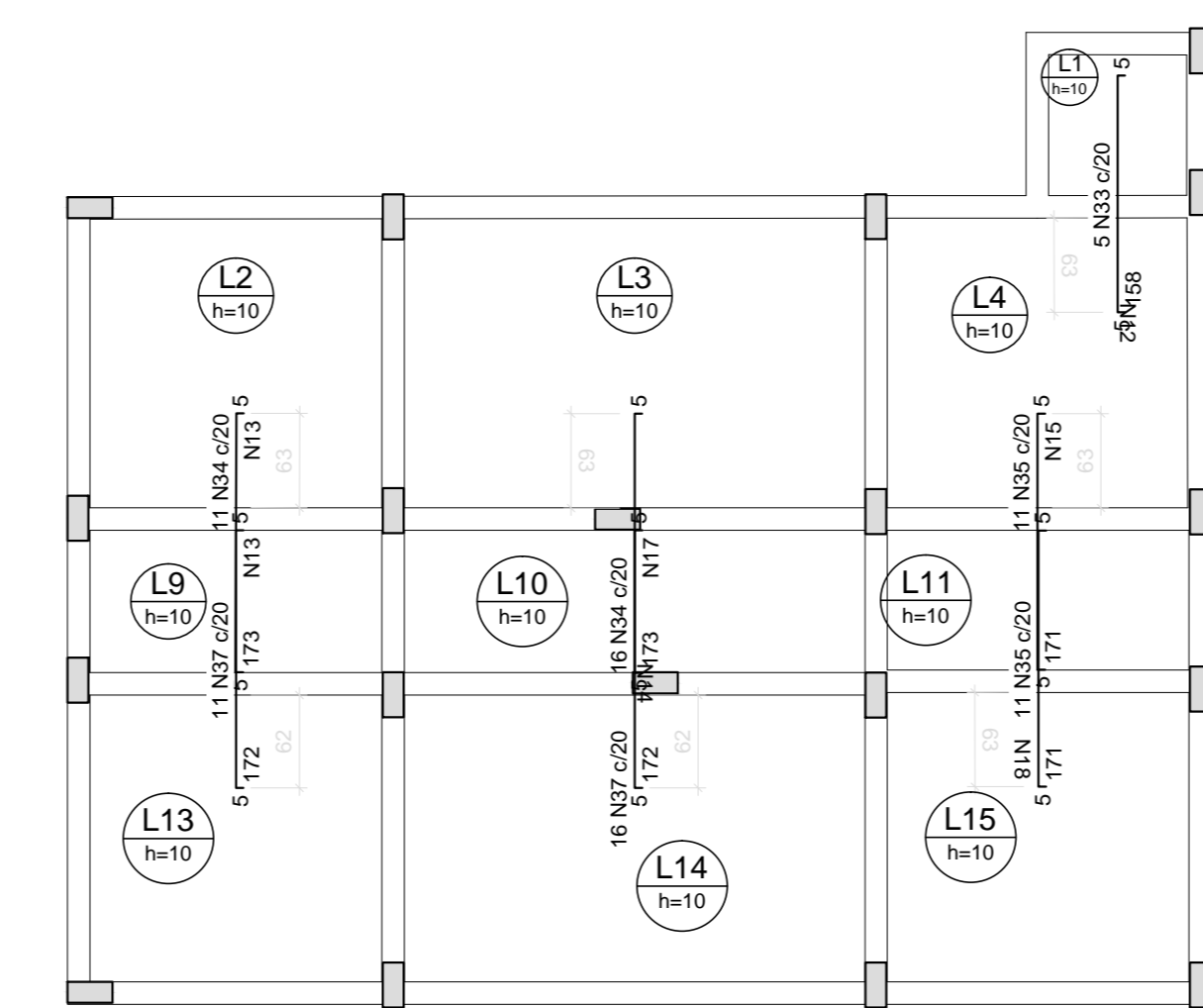
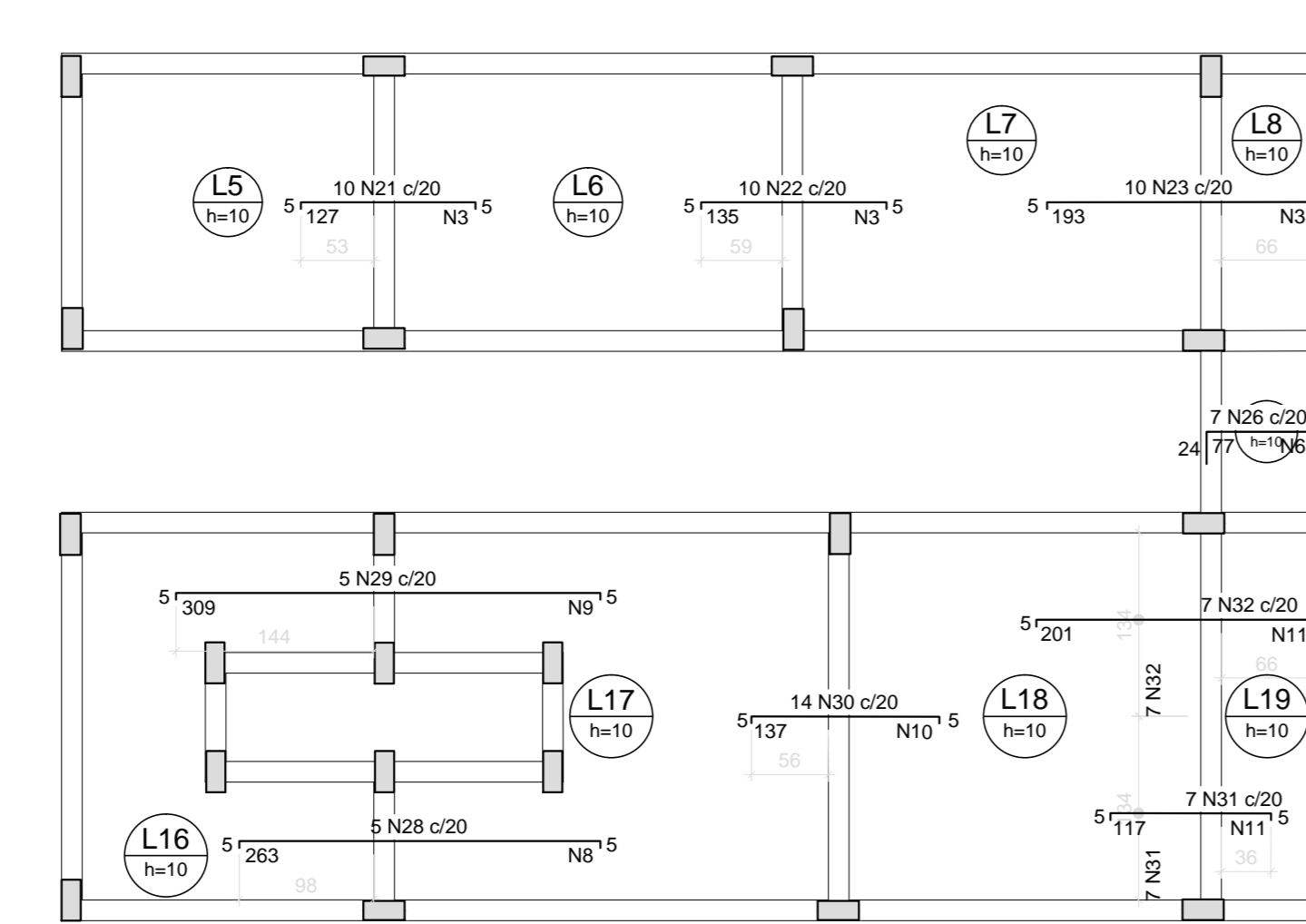
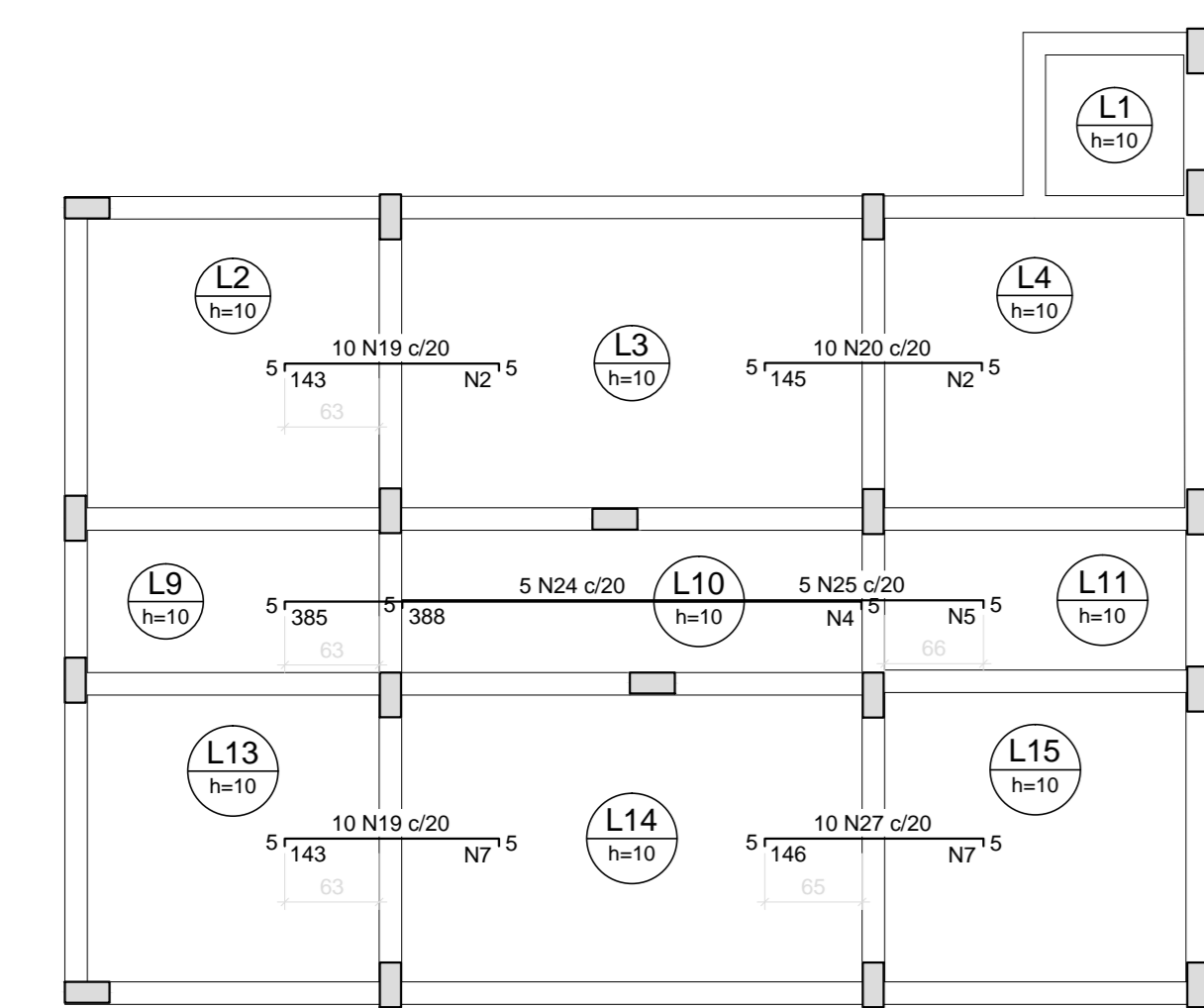
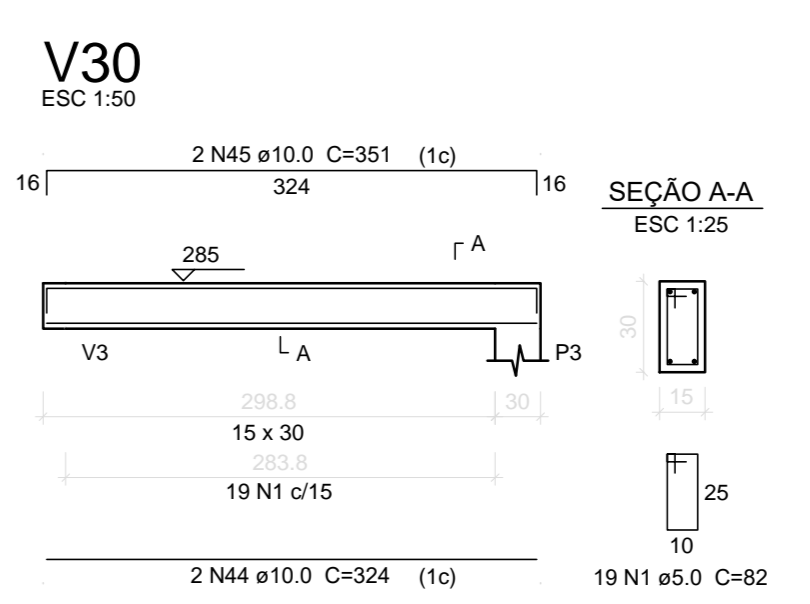
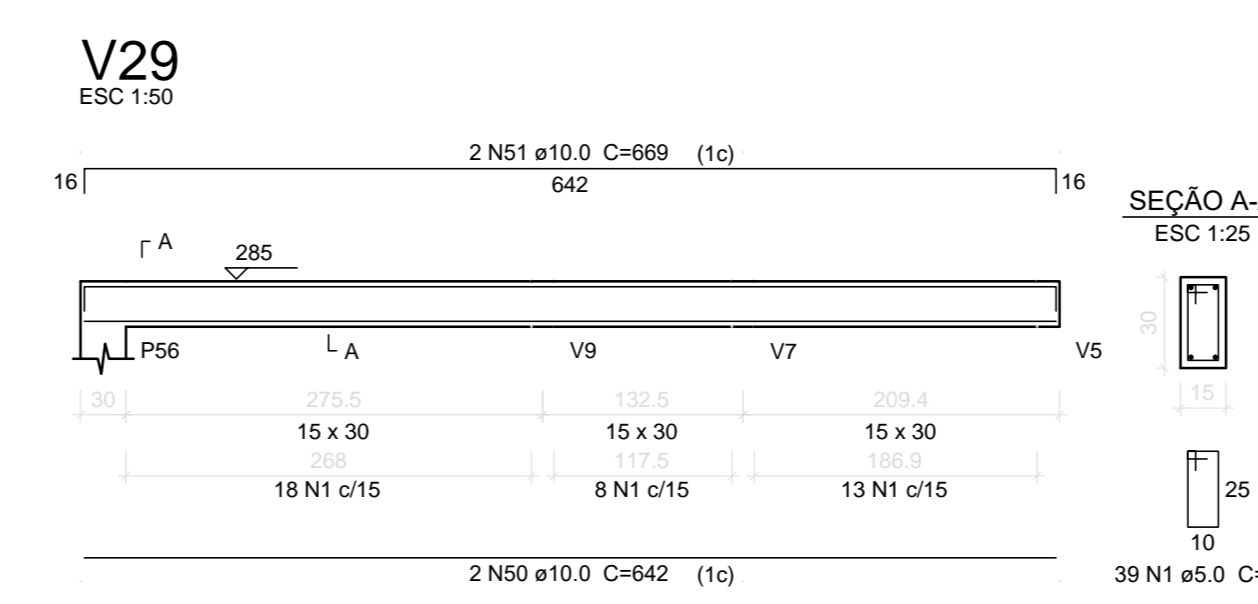
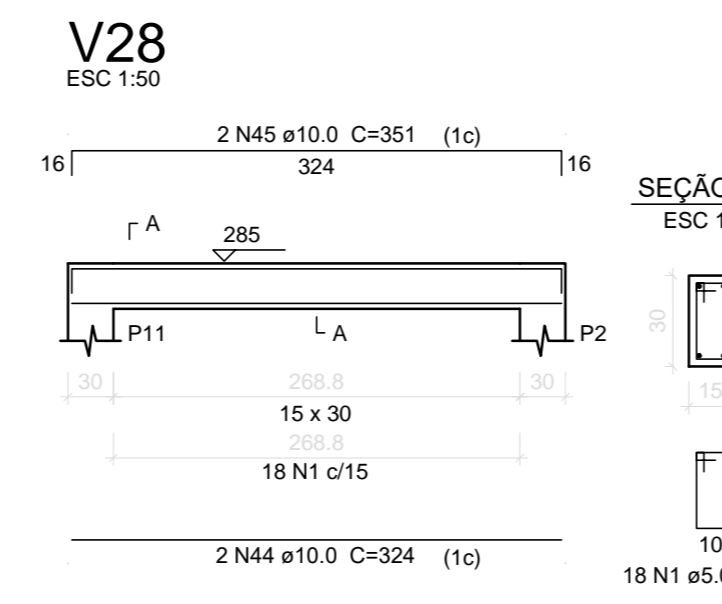
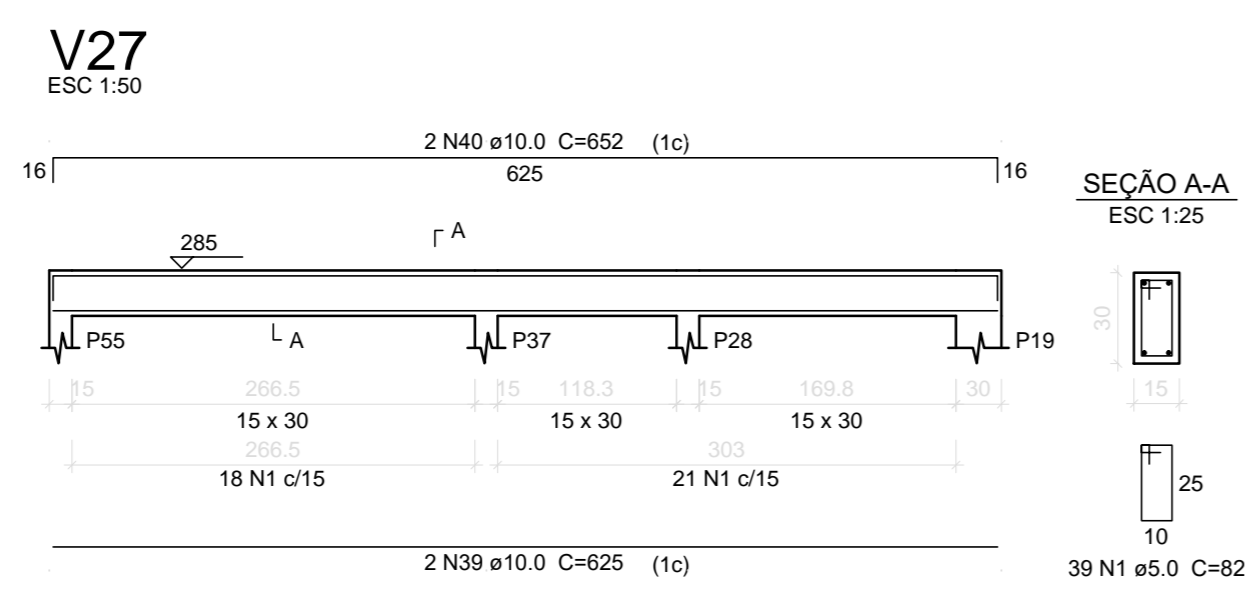
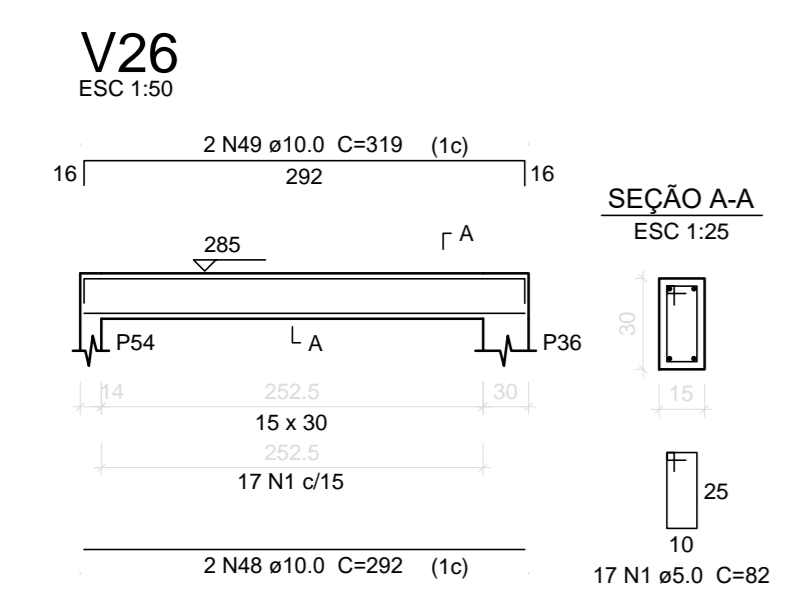
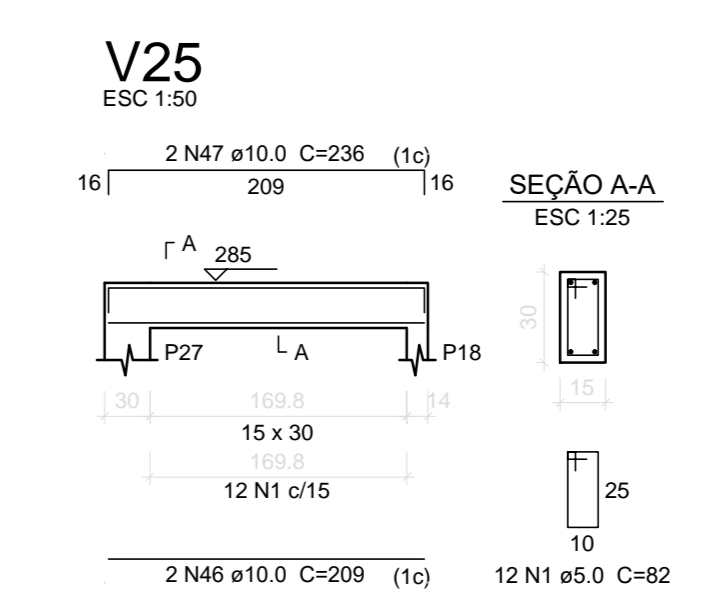
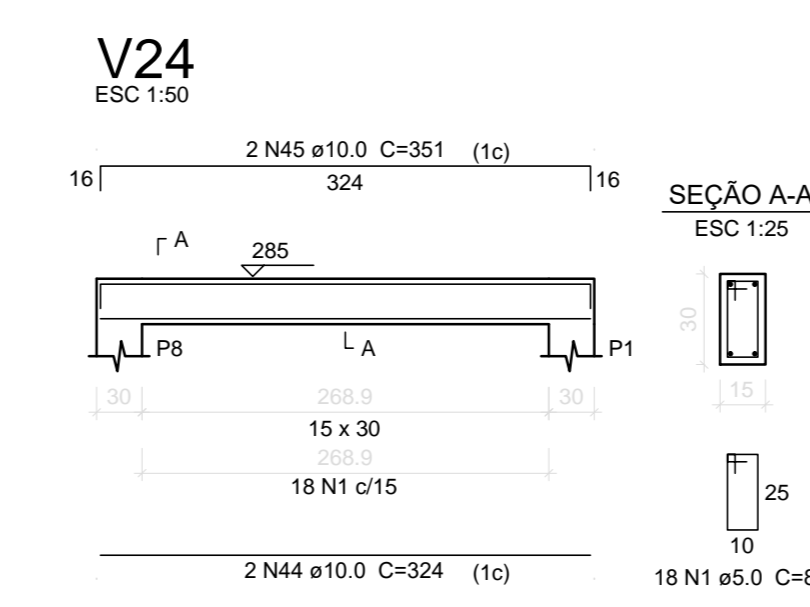
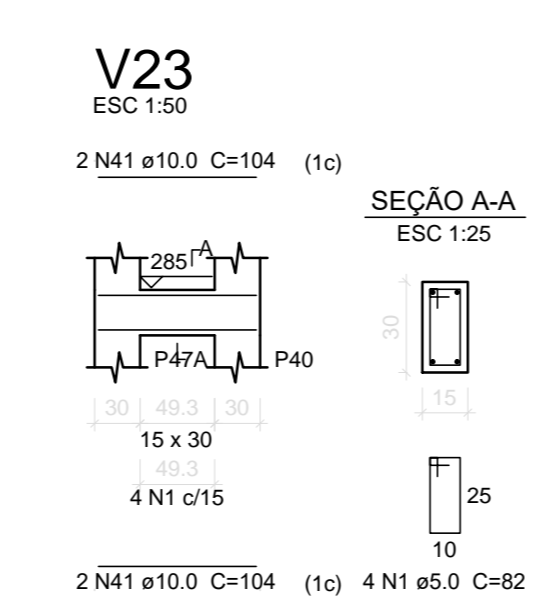
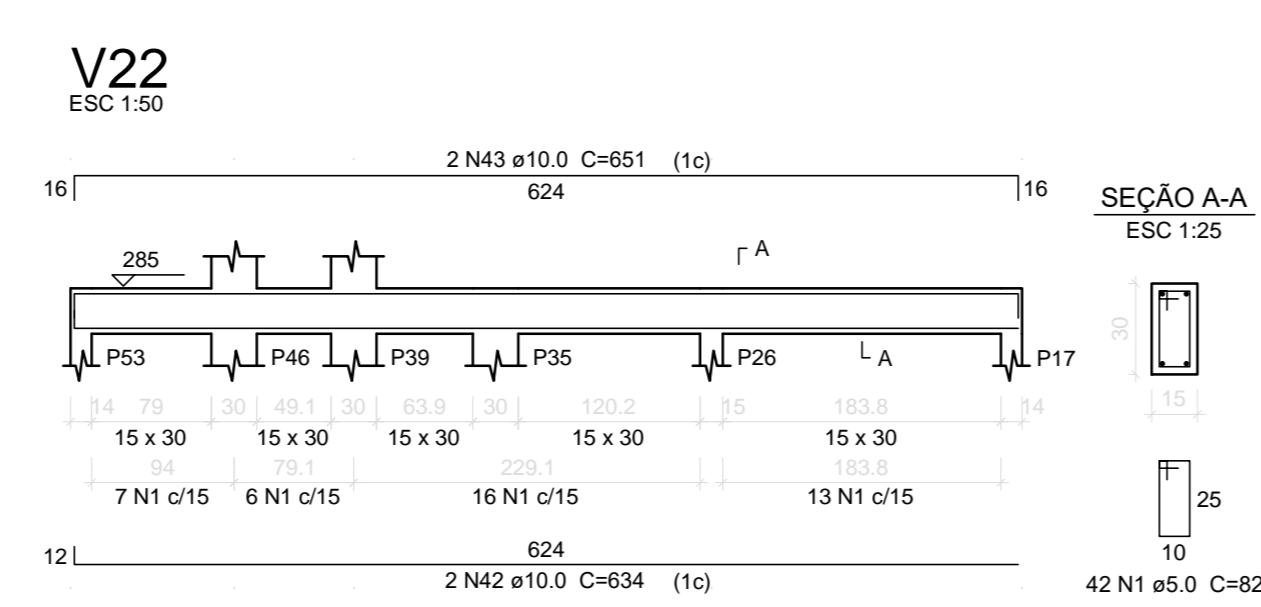
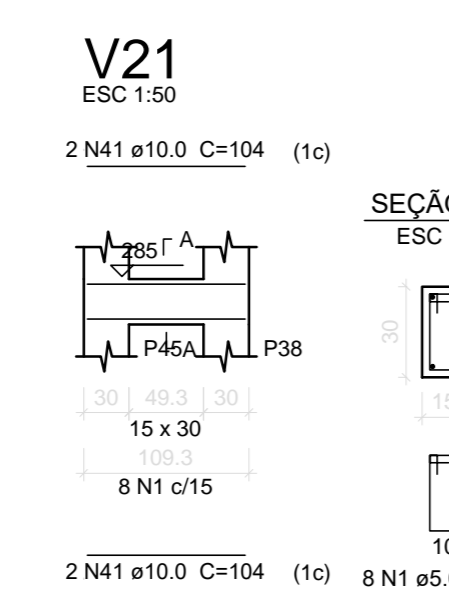
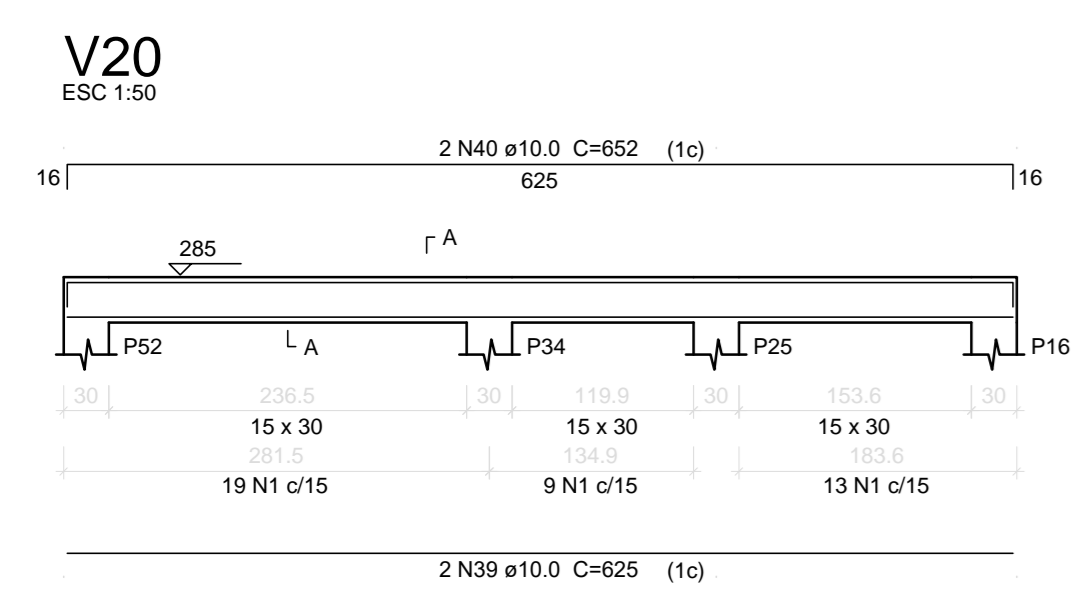


Relação do aço

AÇO	N	DIAM (mm)	QUANT (Barras)	UNIT (cm)	C.TOTAL (cm)
Negativos X	V21	V22	V23	V24	V25
Negativos Y	V26	V27	V28	V29	V30
V20	V21	V22	V23	V24	V25
V26	V27	V28	V29	V30	
V28	V29	V30			
V30					
CA60	1	5.0	257	82	21074
CA60	2	5.0	16	208	3328
CA60	3	5.0	24	202	4848
CA60	4	5.0	20	110	2200
CA60	5	5.0	20	108	2160
CA60	6	5.0	4	133	532
CA60	7	5.0	16	207	3312
CA60	8	5.0	14	101	1414
CA60	9	5.0	16	102	1632
CA60	10	5.0	7	263	1981
CA60	11	5.0	16	141	2256
CA60	12	5.0	8	107	856
CA60	13	5.0	18	210	3780
CA60	14	5.0	9	322	2898
CA60	15	5.0	9	215	1935
CA60	16	5.0	20	81	1620
CA60	17	5.0	9	323	2907
CA60	18	5.0	9	216	1944
CA50	19	6.3	20	150	3000
CA50	20	6.3	10	152	1520
CA50	21	6.3	10	134	1340
CA50	22	6.3	10	142	1420
CA50	23	6.3	10	200	2000
CA50	24	6.3	5	392	1960
CA50	25	6.3	5	395	1975
CA50	26	6.3	7	103	721
CA50	27	6.3	10	153	1530
CA50	28	6.3	5	270	1350
CA50	29	6.3	5	316	1580
CA50	30	6.3	14	144	2016
CA50	31	6.3	7	124	868
CA50	32	6.3	7	208	1456
CA50	33	6.3	5	165	825
CA50	34	6.3	27	180	4860
CA50	35	6.3	22	178	3916
CA50	36	6.3	4	199	796
CA50	37	6.3	27	179	4833
CA50	38	6.3	4	193	772
CA50	39	10.0	4	625	2500
CA50	40	10.0	4	652	2608
CA50	41	10.0	8	104	832
CA50	42	10.0	2	634	1268
CA50	43	10.0	2	651	1302
CA50	44	10.0	6	324	1944
CA50	45	10.0	6	351	2106
CA50	46	10.0	2	209	418
CA50	47	10.0	2	236	472
CA50	48	10.0	2	292	584
CA50	49	10.0	2	319	638
CA50	50	10.0	2	642	1284
CA50	51	10.0	2	669	1338

Resumo do aço

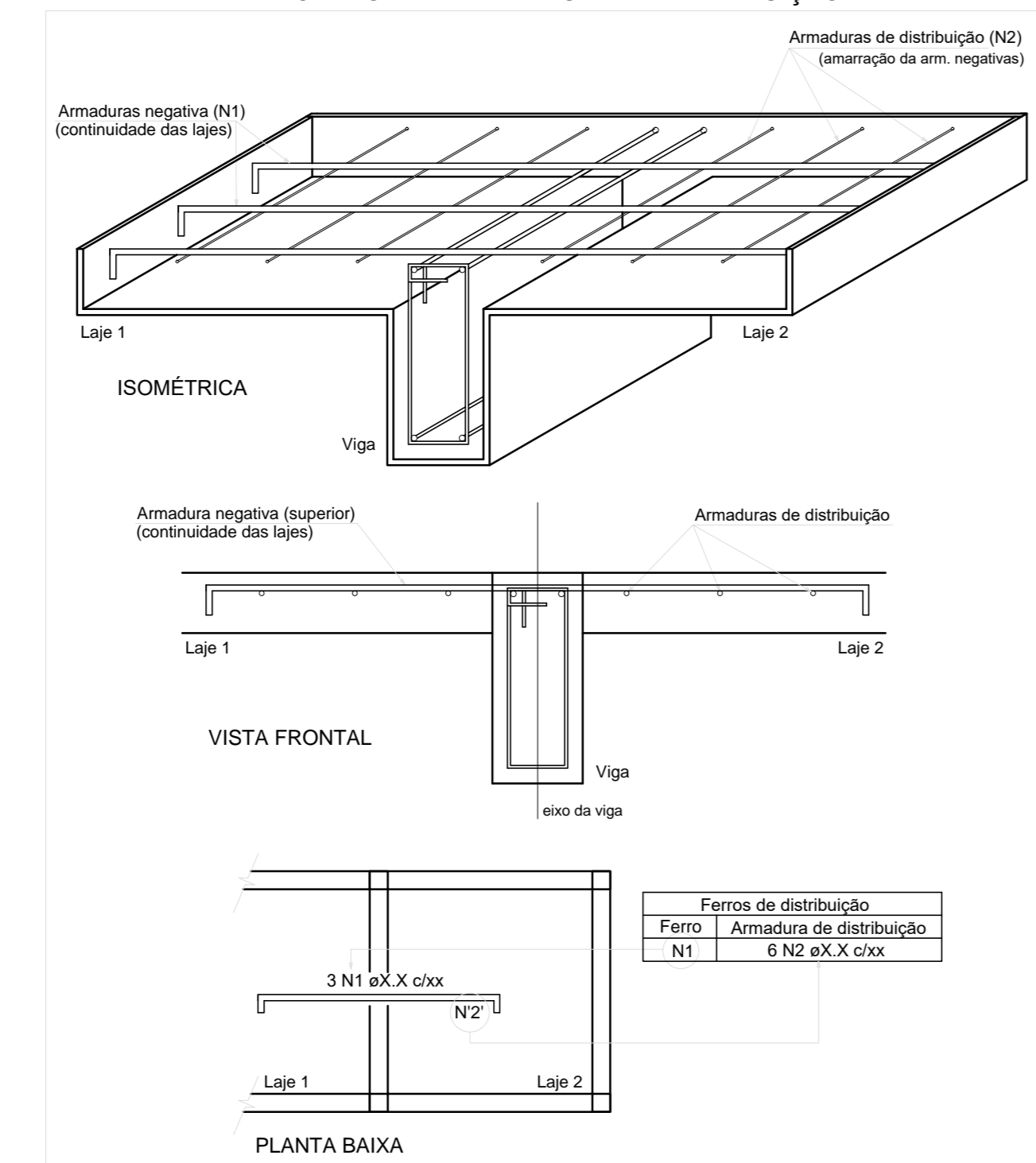
AÇO	DIAM (mm)	C.TOTAL (m)	PESO + 10% (kg)
CA50	6.3	387.4	104.3
CA50	10.0	173	117.3
CA60	5.0	606.8	102.9
PESO TOTAL (kg)			
CA50	221.6		
CA60	102.9		
Volume de concreto (C-25) = 1.91 m³			
Área de forma = 31.88 m²			



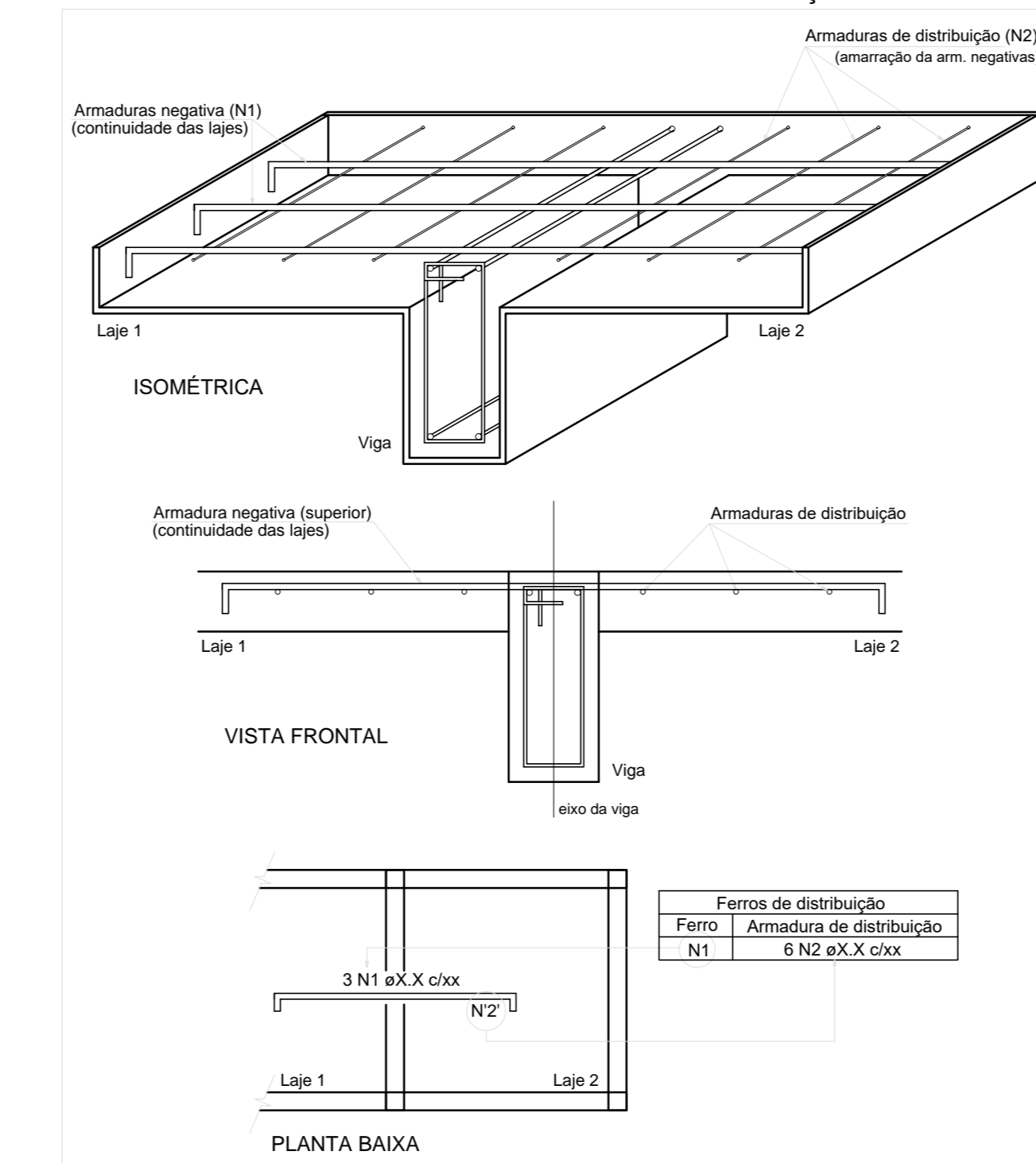
Armação negativa das lajes do pavimento COBERTURA (Eixo X)
ESCALA 1:50

Armação negativa das lajes do pavimento COBERTURA (Eixo Y)
ESCALA 1:50

DETALHE DA ARMADURA DE SUPERIOR DE CONTINUIDADE DA LAJE E MONTAGEM DA ARMADURA DE DISTRIBUIÇÃO



DETALHE DA ARMADURA DE SUPERIOR DE CONTINUIDADE DA LAJE E MONTAGEM DA ARMADURA DE DISTRIBUIÇÃO



00	Emissão Inicial	23/05/2017
REVISÃO	DESCRIÇÃO	DATA
OBRA:	Operação de Busca e Resgate com Cães - Canil	
ENDEREÇO:	SCES Trecho 02 Lote 15, Plano Piloto - DF	
PROPRIETÁRIO:	Corpo de Bombeiros Militar do Distrito Federal - CBDMF	
AUTOR DO PROJETO:		
RESPONSÁVEL TÉCNICO (obra)		
PROPRIETÁRIO	AUTOR DO PROJETO	
RESPONSÁVEL TÉCNICO (obra)		
OBRA	DESCRIÇÃO	DATA
BRASILIA/DF	Operação de Busca e Resgate com Cães - Canil	DESENHO Nº
EST	ARMADURAS LAJES 1	02/18
UNIDADE:	cm	ESCALA: Indicada