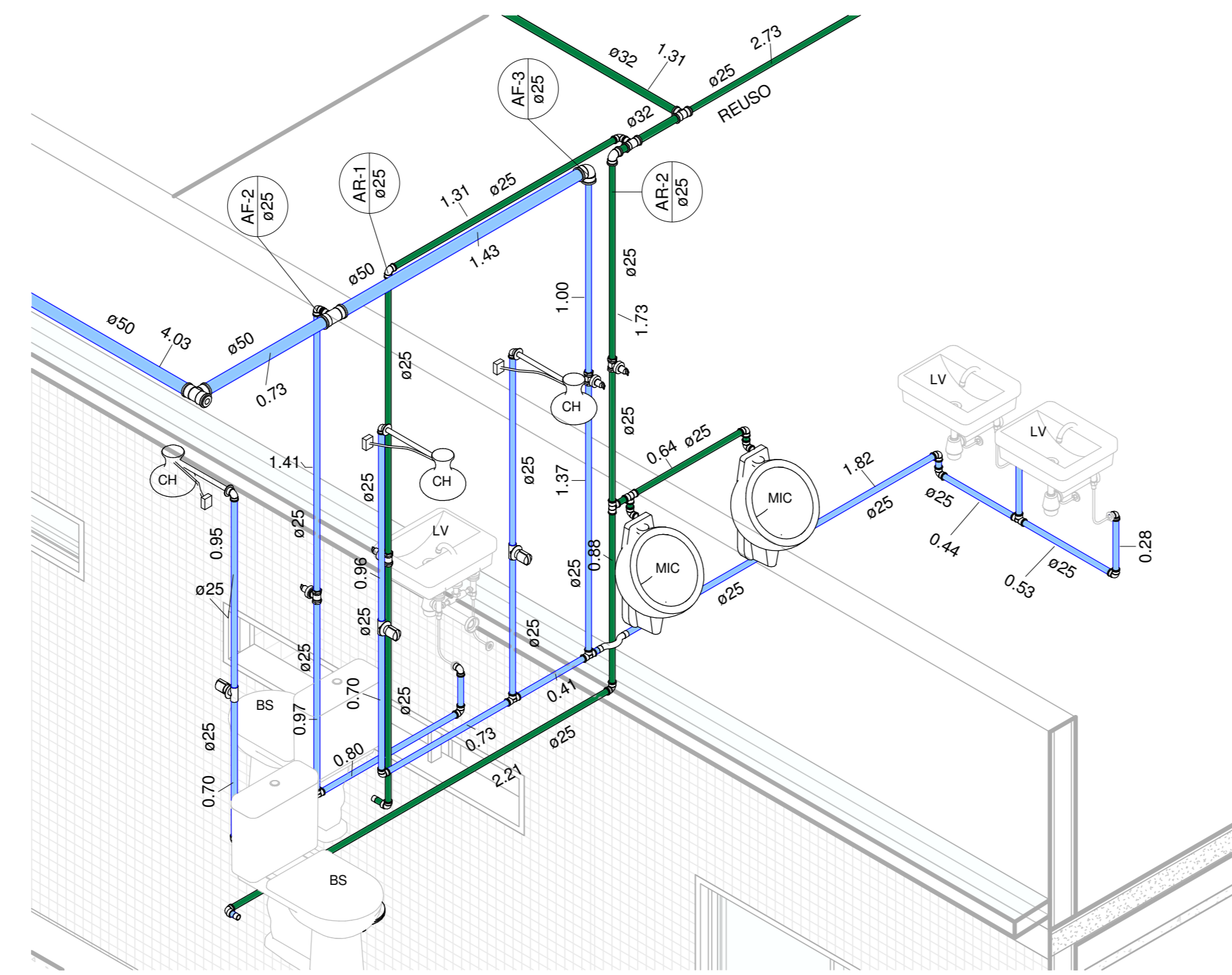
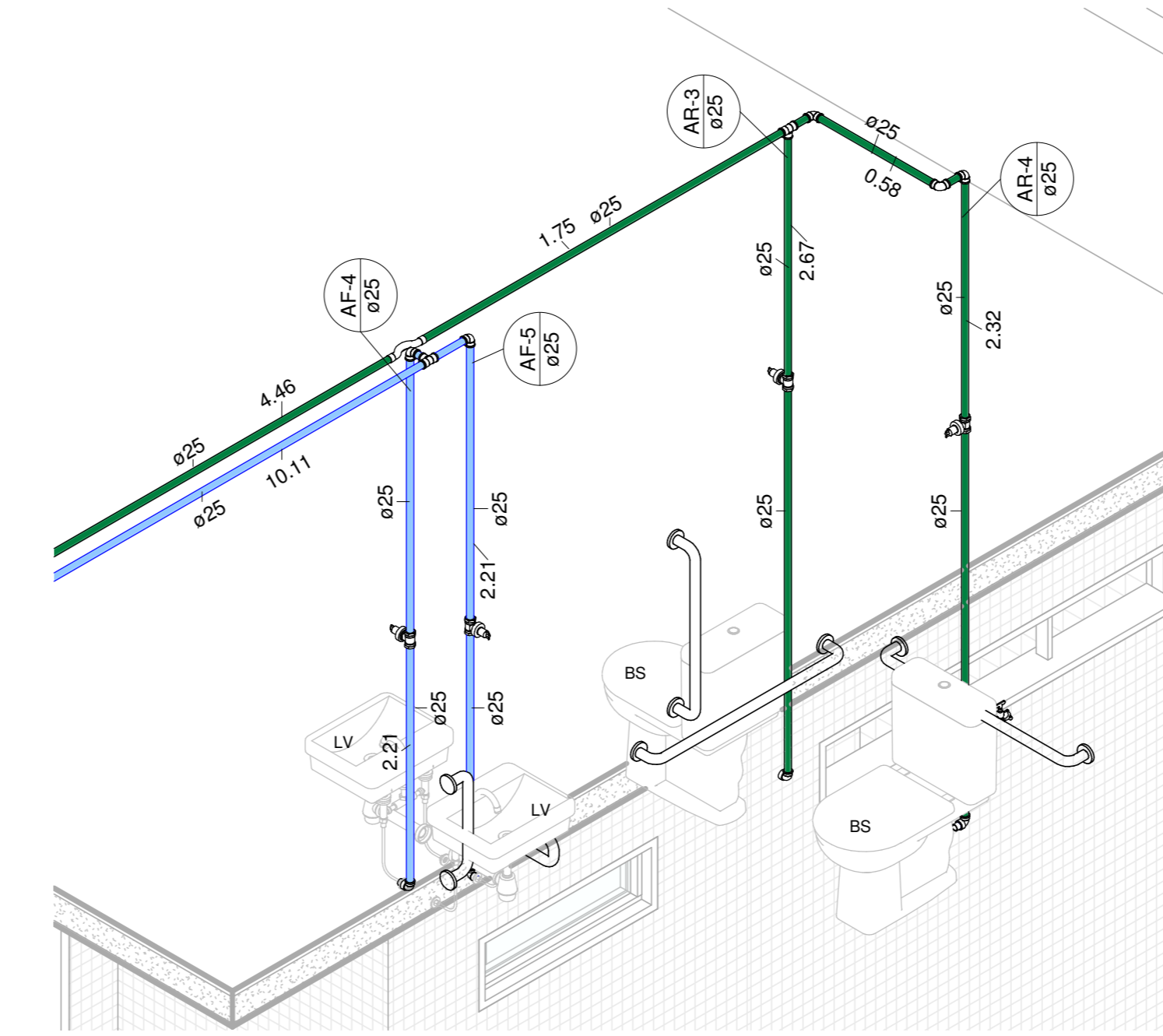


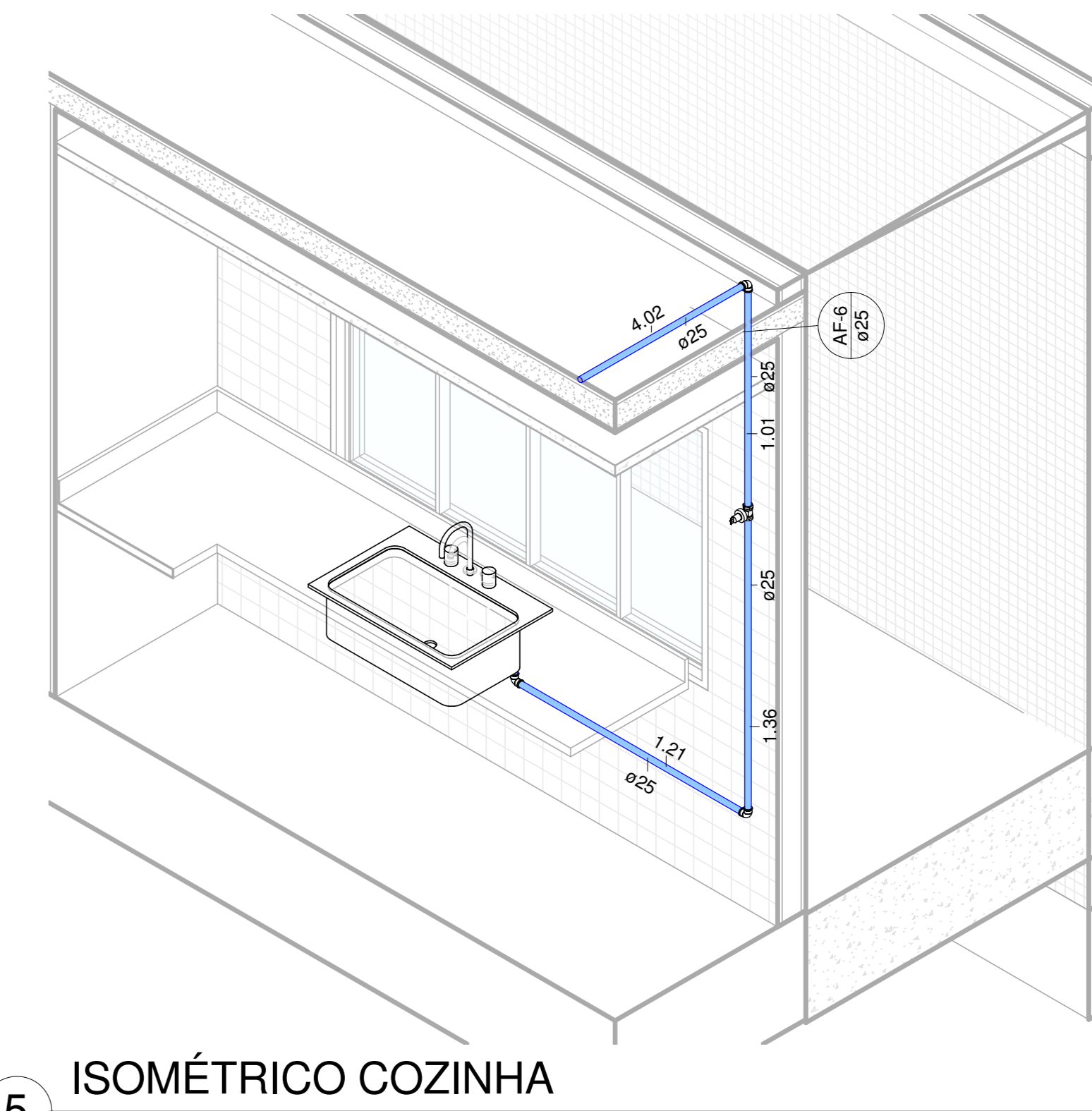
1 NÍVEL TERRENO
1:500



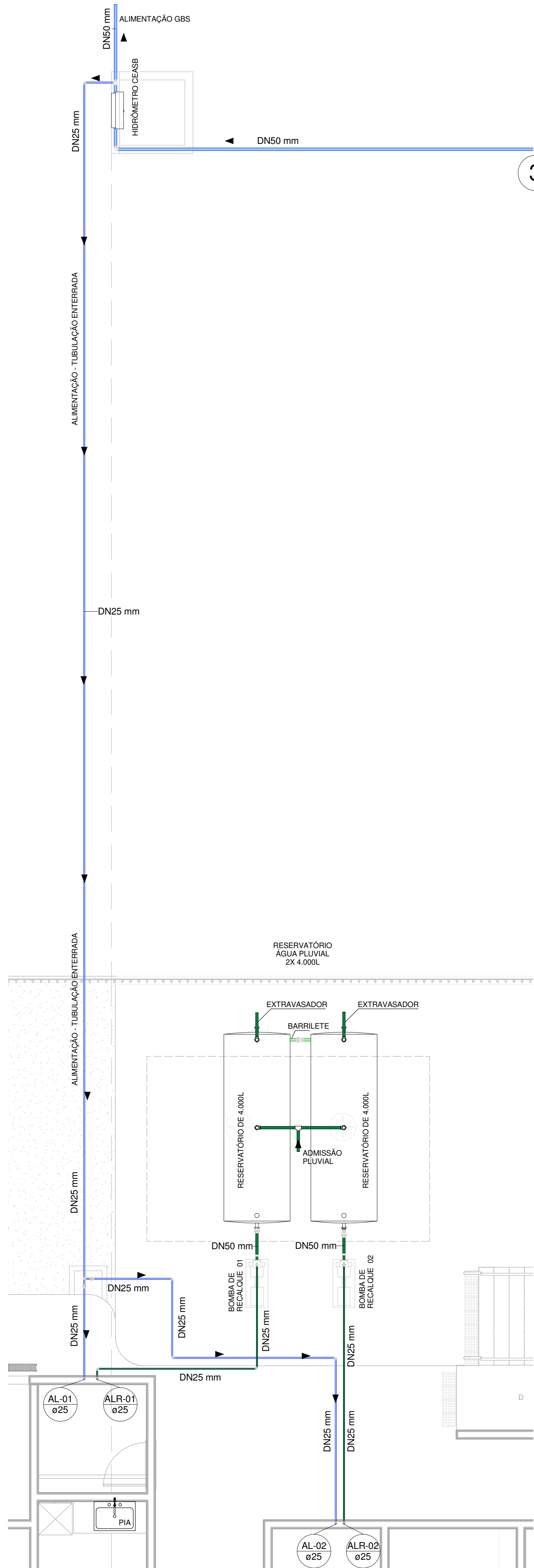
3 ISOMÉTRICO BANHEIROS



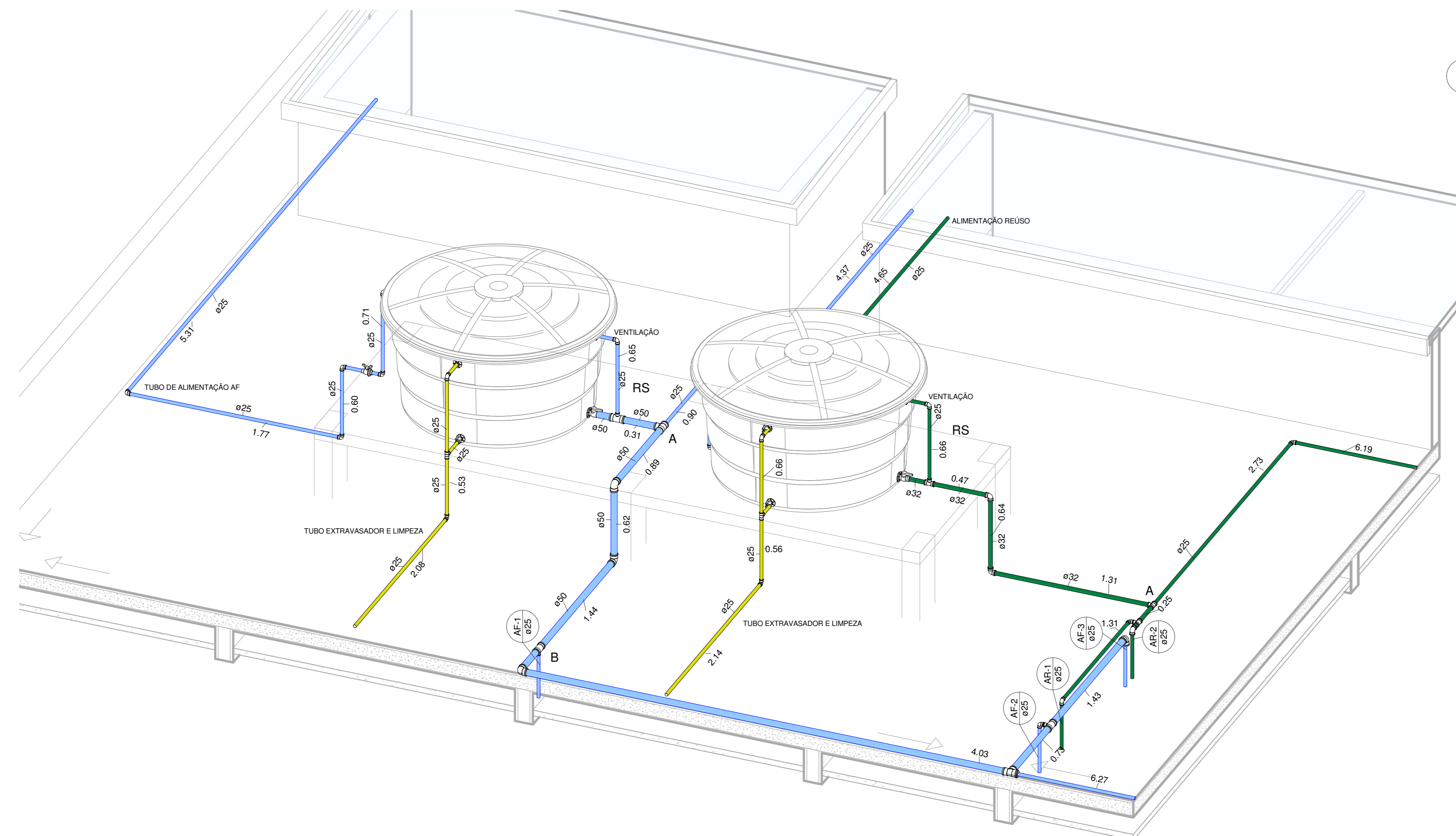
4 ISOMÉTRICO WC-PNE



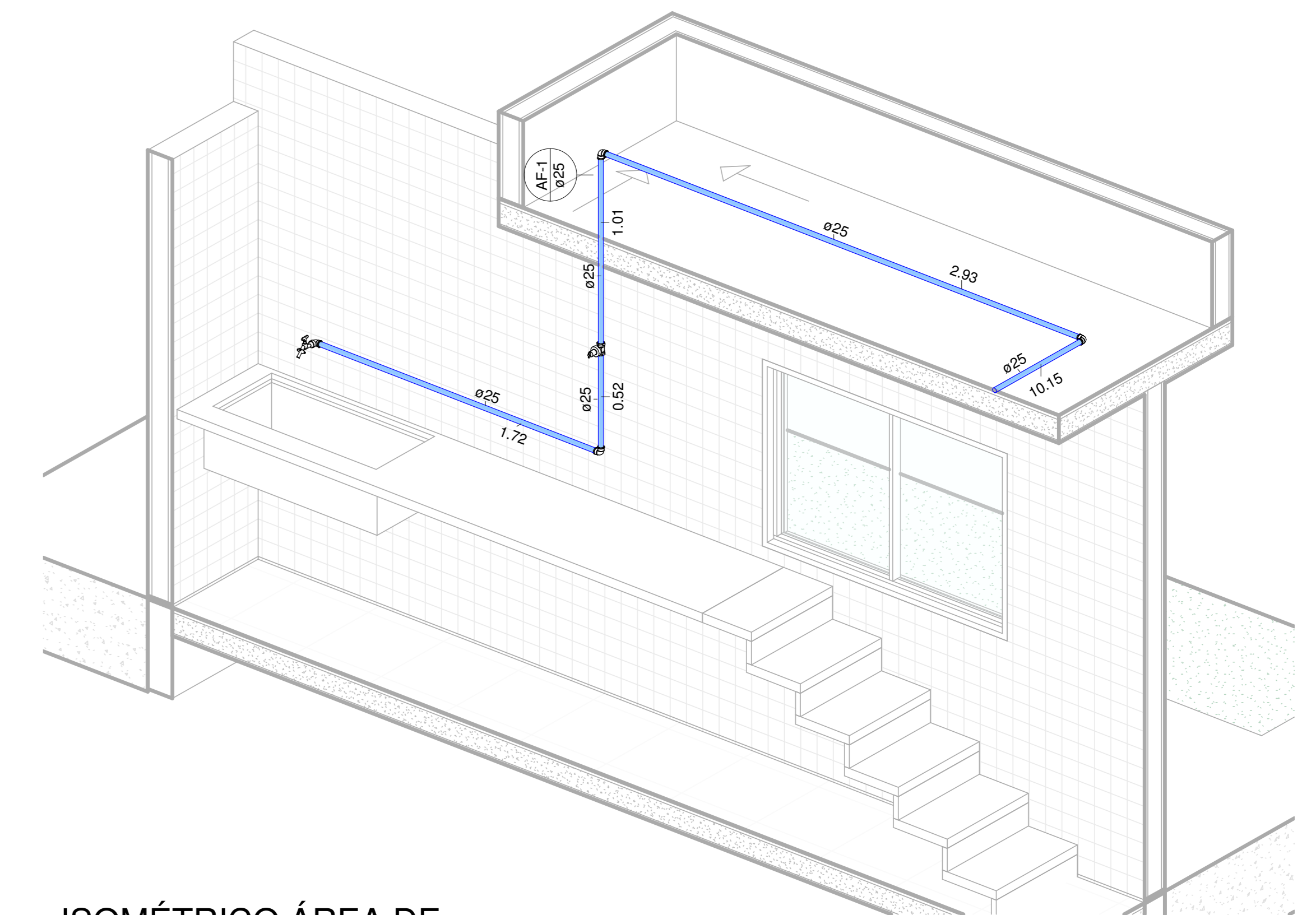
5 ISOMÉTRICO COZINHA



2 RESERVATÓRIO E ALIMENTAÇÃO
1:50



7 ISOMÉTRICO RESERVATÓRIO BLOCO I



6 ISOMÉTRICO ÁREA DE BANHO DOS CÃES

SETOR SETOR DE CLUBES ESPORTIVOS NORTE
 ENDEREÇO JOÃO PESSOA/PB
 PROPRIETÁRIO ALAN ARAÚJO
 AUTOR DO PROJETO MAJ COB/M/Comb. ISAAC DA SILVA BARBOSA MIRANDA - CREA 18.188/D-DF



CORPO DE BOMBEIROS MILITAR DO DISTRITO FEDERAL
 MAJ COB/M/Comb. ISAAC DA SILVA BARBOSA MIRANDA - CREA 18.188/D-DF

RESP. TÉCNICO CREA - CAU